

## DATA SHEET

### 3-way Zone Ball Valves with Actuator, VZK S model



#### Main Features

Application	It serves as a diverter valve that does not interrupt the flow of fluid through the common port during switching. It can be used in connection with any controller or thermostat that has a 230 V switching contact for switching the switched phase of the actuator. In the event of a controller or thermostat failure, the actuator can be operated manually.
Working fluid	Drinking water, water, water/glycol (max. 1:1) or water/glycerine (max. 2:1).
Installation	Any position, except for the actuator facing downwards.

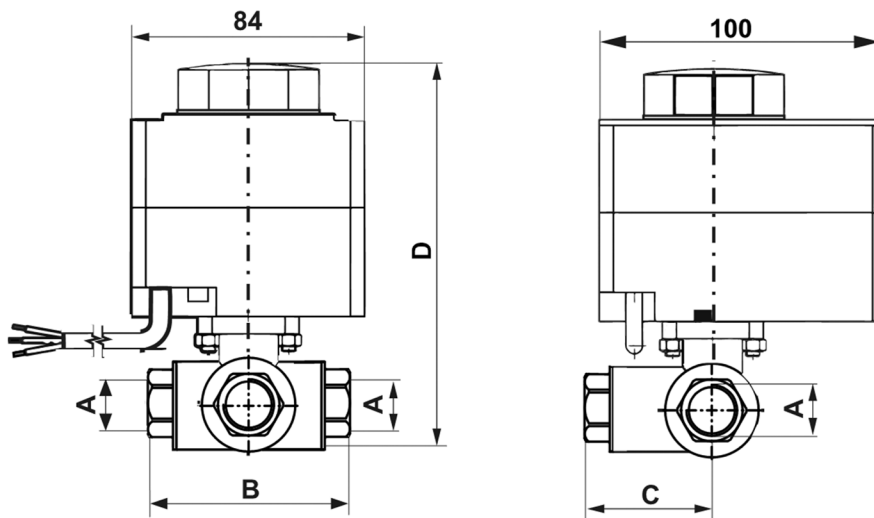
#### Table of Codes – L-bore Valves

Marking	Code	Nominal clearance DN	Connecting thread	Open time [s]	$K_{vs}$ directly [ $m^3/h$ ]	$K_{vs}$ perpendicular [ $m^3/h$ ]	Weight [kg]	A	B [mm]	C [mm]	D [mm]
VZK S 320-230-1P-60 L 3/4F	19838	20	3x G 3/4" F	60	–	10.5	1.3	G 3/4" F	96	50	160
VZK S 320-230-1P-60 L 1F	19835	20	3x G 1" F	60	–	10.6	1.3	G 1" F	96	50	160
VZK S 325-230-1P-60 L 1F	11287	25	3x G 1" F	60	–	14.3	1.7	G 1" F	104	52	168

#### Table of Codes – T-bore Valves

Marking	Code	Nominal clearance DN	Connecting thread	Open time [s]	$K_{vs}$ directly [ $m^3/h$ ]	$K_{vs}$ perpendicular [ $m^3/h$ ]	Weight [kg]	A	B [mm]	C [mm]	D [mm]
VZK S 320-230-1P-60 T 3/4F	19840	20	3x G 3/4" F	60	17.8	10.5	1.3	G 3/4" F	96	50	160
VZK S 320-230-1P-60 T 1F	19833	20	3x G 1" F	60	19.5	10.6	1.3	G 1" F	96	50	160
VZK S 325-230-1P-60 T 1F	18675	25	3x G 1" F	60	28.3	14.3	1.7	G 1" F	104	52	168

#### Dimensions





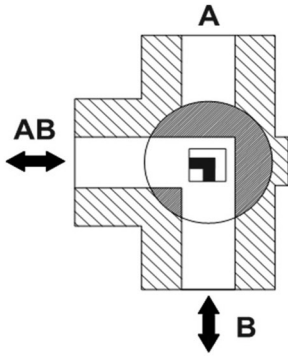
## DATA SHEET

### 3-way Zone Ball Valves with Actuator, VZK S model

#### Installation and Operation

- Fluid can flow in both directions through the valve (common port can be used either as inlet or outlet).
- Direction of fluid flow through the valve is indicated by the actuator control knob or by the groove on the valve spindle (after removing the actuator).
- Label is affixed to the actuator showing the direction of fluid flow in colour according to the rotation direction of the control knob.
- Factory setting of the default position and direction of rotation can be changed, see instructions.

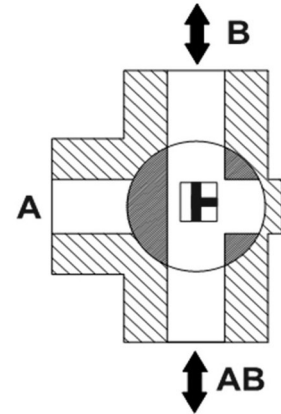
#### Factory settings



L-bore valve



T-bore valve



#### Actuator with label

